

IPv6 in WhatsUp Gold

Comprehensive Monitoring for both IPv4 and IPv6 Enabled Devices

One of the key features in WhatsUp Gold is its ability to discover, map and monitor as well as alert and report on IPv6 enabled devices. It also features IPv6 ready tools including Ping and Traceroute to locate and document devices with IPv6 addresses.

WhatsUp Gold polls IPv6 devices using ICMP ping, which can distinguish between address types and use either IPv6 or IPv4 packets, depending on the type of IP address that is provided.

In addition, the WhatsUp Gold Web server can be configured with an IPv6 address.

Any devices requiring monitoring that are configured with IPv6 addresses can be added to your WhatsUp Gold implementation in two ways:

1. Manually adding a single device in the WhatsUp Gold Dashboard.
2. Importing a host file from the Device Discovery Wizard.

To add a single device:

Start by selecting the Device Group to which you want to add the device. Then, from the WhatsUp Console, go to **File > New Device**

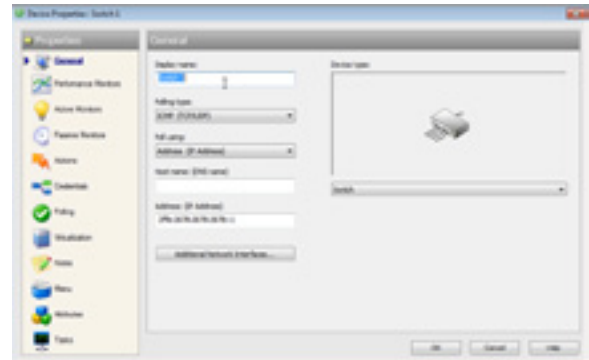


Add New Device Dialog Box

- Enter the host name or IPv6 address of the device you want to add.
- Click **Advanced** to select active monitors to scan the device for.
- Click **OK** to start the discovery scan on that device.

Note: Selecting **Add device immediately without scanning** immediately adds a “bare-bones” device to your network, generically categorized as a workstation with a Ping monitor.

Then the Device Properties dialog box appears for this newly added device.



Device Properties Dialog Box

You can accept or modify the device's default properties, then click **OK**.

When you click **OK**, the new IPv6 device icon appears in the Map View and the device will start polling.



To import a host file:

From the WhatsUp Gold Management Console, go to **File > Discover Devices**.



Device Discovery Methods Dialog Box

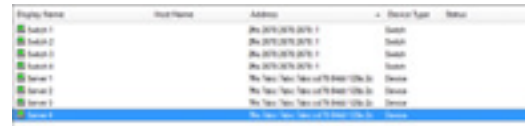
IPv6 in WhatsUp Gold

- In the Device Discovery Wizard, select
- **Hosts file** import. Click **Next**. (Other discovery modes are not supported in this demo.)
- Browse or enter the full path to the Host file you want to import into WhatsUp Gold. Click **Next**.
- In the SNMP Communities dialog box, enter the proper read community string. Click **Advanced** if you would like to change the scan's default settings.
- The Active/Performance Monitors to Scan dialog box appears. Select the type of Active and/or Performance monitors you wish to use in this scan process.
 - All Active monitors work with IPv6 with the exception of the WMI, Exchange, and SQL monitors. The CPU, Disk, Interface, Memory, Ping, and Custom SNMP Performance monitors all support IPv6.
- Click **Next**. The Device Discovery displays the estimated remaining scan time and the scan's progress.
- When the Discovery process is finished, the **Devices to Monitor** dialog box appears, listing all of the devices that have just been discovered. If any of these devices have already been entered into the database, a shortcut to that device will automatically be created in the device view. To add these devices to the database, click **Next**. To remove specific devices to be monitored from this list, clear the checkbox next to the device.
- Click **Next**. The Action Policy selection dialog box appears. Complete the remaining dialogs in the Wizard.

The Results summary shows the number of selected new devices, the number of Active monitors, whether an Action Policy is applied, and the number of selected device shortcuts.

- Click **Finish** to begin monitoring your IPv6 devices.

The new IPv6 devices are displayed in Device View. In Device View, devices are sorted by IP address and both IPv4 and IPv6 devices can be seen on the same maps.



Display Name	Host Name	Address	Device Type	Status
Switch 1	10.20.10.10	10.20.10.10	Switch	Online
Switch 2	10.20.10.10	10.20.10.10	Switch	Online
Switch 3	10.20.10.10	10.20.10.10	Switch	Online
Server 1	10.20.10.10	10.20.10.10	Server	Online
Server 2	10.20.10.10	10.20.10.10	Server	Online
Server 3	10.20.10.10	10.20.10.10	Server	Online

WhatsUp Gold Device View

For More Information

For more general information about how to use WhatsUp Gold, refer to the **Getting Started Guide** and/or the application's online help. Both are great resources for configuration and solution information.

www.whatsupgold.com/support

Copyright ©2011, Ipswitch, Inc. All rights reserved. WhatsUp is a registered trademark of Ipswitch, Inc. Other products or company names are or may be trademarks or registered trademarks and are the property of their respective holders.